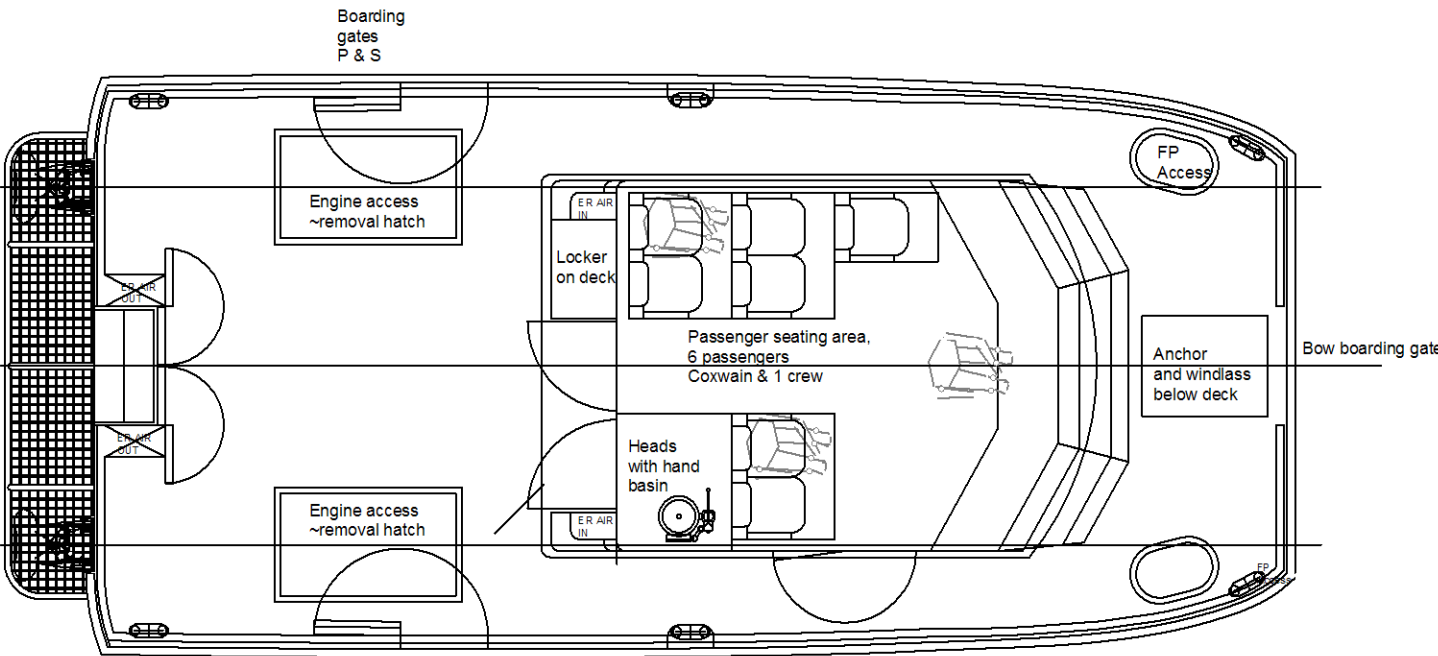
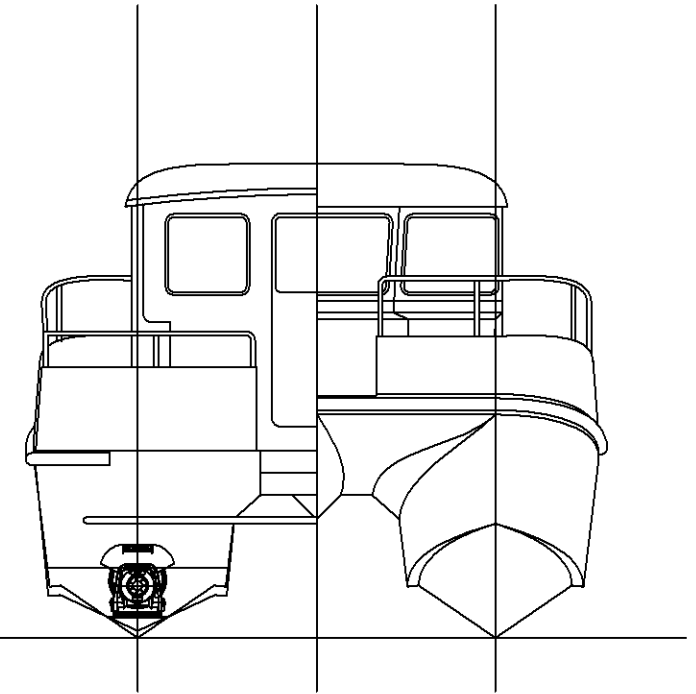
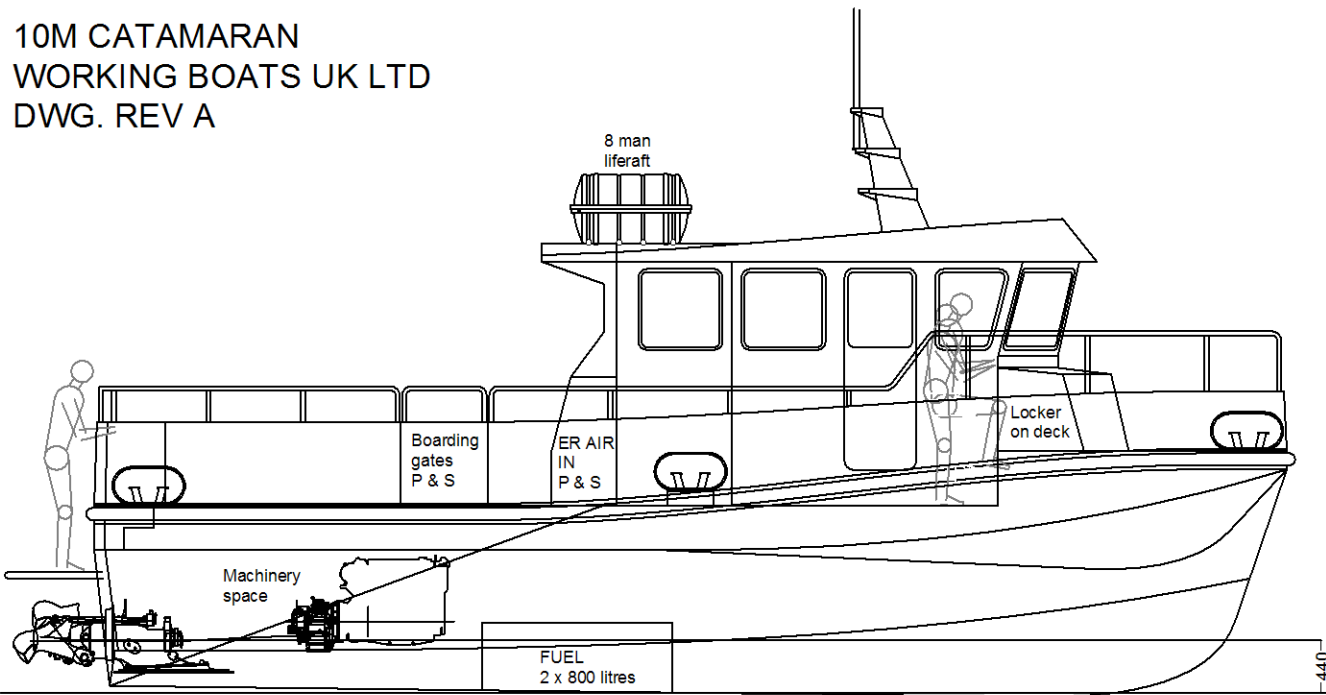


10M CATAMARAN
 WORKING BOATS UK LTD
 DWG. REV A



MAIN PARTICULARS:

Length overall 10.00m (excluding fenders and stern platform)
 Beam moulded 4.75m (excluding fenders)
 Depth moulded 1.57m (amidships)
 Draft 0.44m

Fuel oil 1,600 litres (two tanks)
 Fresh water TBA
 Deck cargo 1,000 kg approx

Main Engines 2 x 350hp
 Drive Hamilton 274 waterjets
 Speed 30 knots
 Range 300 miles

Classification UK Code of Practice Cat 2, 8 persons
 Alternative classification available