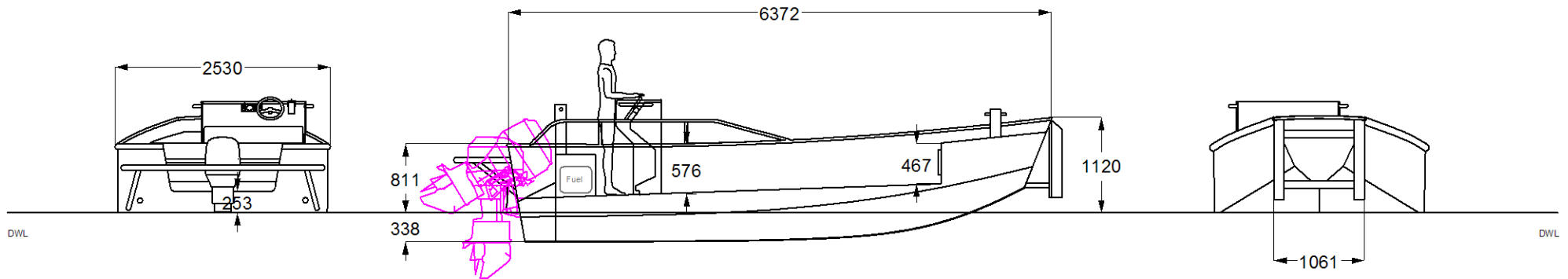
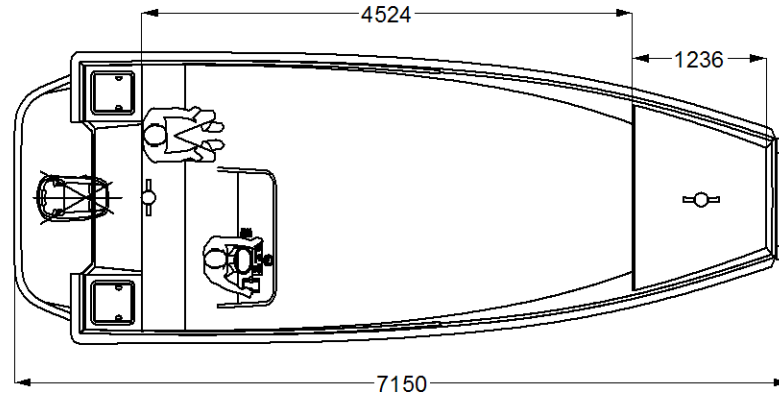


RFQ-PR09-09-104

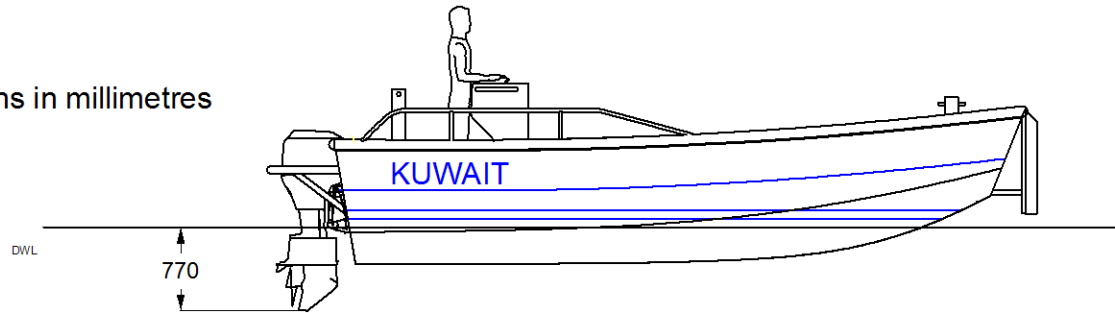
WORKSTAR 640 RHINO
for oil spill work Kuwait
WORKING BOATS UK LTD
Copyright reserved 2009

Working Boats UK Ltd

Workstar 640 RHINO		
General Arrangement Typical Dimensions Radar arch omitted for clarity	KUWAIT -01	27/08/09



All dimensions in millimetres



Working Boats UK Ltd

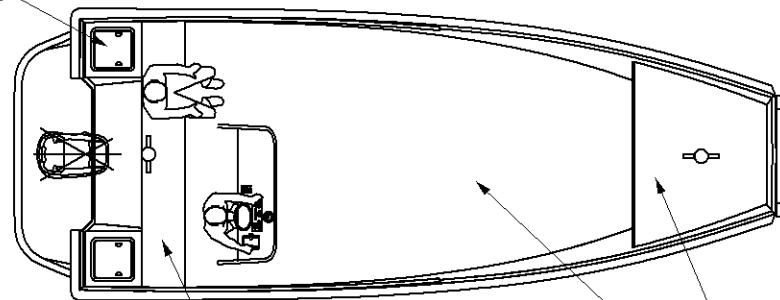
Workstar 640 RHINO

General Arrangement
Annotations

KUWAIT
-02

27/08/09

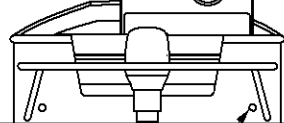
Lockers P&S



Wood slat bench seat

Heavy duty non-slip paint

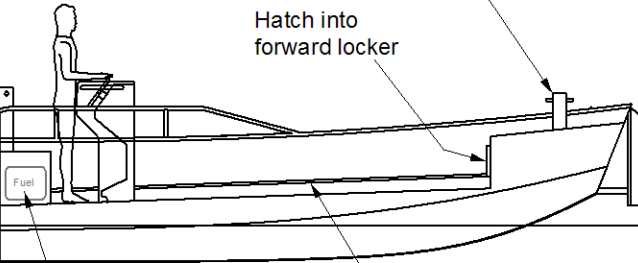
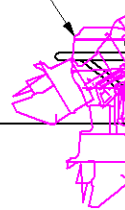
Handholds round console



Load deck drains

Tow post

Yamaha F100BETL



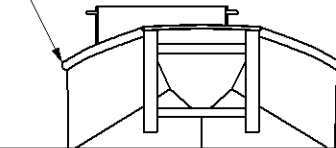
Fuel tanks stow under seat

Cargo lash down rail P&S

Samson post

Hatch into forward locker

Heavy duty D fendering all round

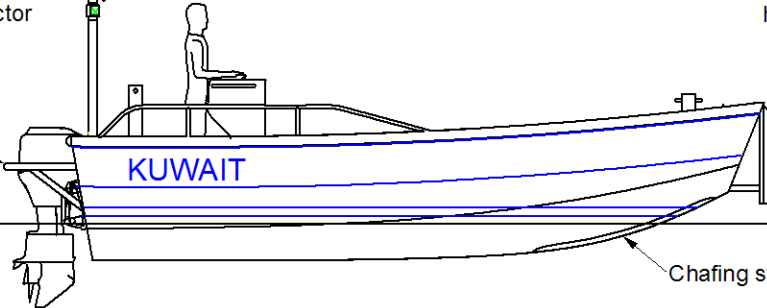


DWL

DWL

Radar arch with nav. lights, radar reflector

Decklights



Outboard protection bar

Pusk knees with heavy duty D fendering

DWL

Chafing strip

KUWAIT